

Westlake Housing communities offer affordability and comfort!



From I-635, exit Oates and head northeast for about a half mile. LBJ Garden Villas will be on your left. You will enjoy the convenience of LBJ Garden Villas. Located just off I-635, in an exceptional location just minutes from Downtown Dallas, major highways, schools, fine dining and shopping.



Amenities

- . Detached Single Garages Available
- . Sand Volleyball Court
- . Gazebo Picnic Area
- . Swimming Pool
- . Playground
- . Limited Access Gates
- . Ceramic Tile Entries
- . Washer / Dryer Connections
- . Executive Business Center
- . Clothes Care Center
- . Picnic Area
- . Microwave
- . Fireplace



Professionally Managed By:



*Live the
Experience Today*

1725 Oates Drive
Mesquite, TX 75150

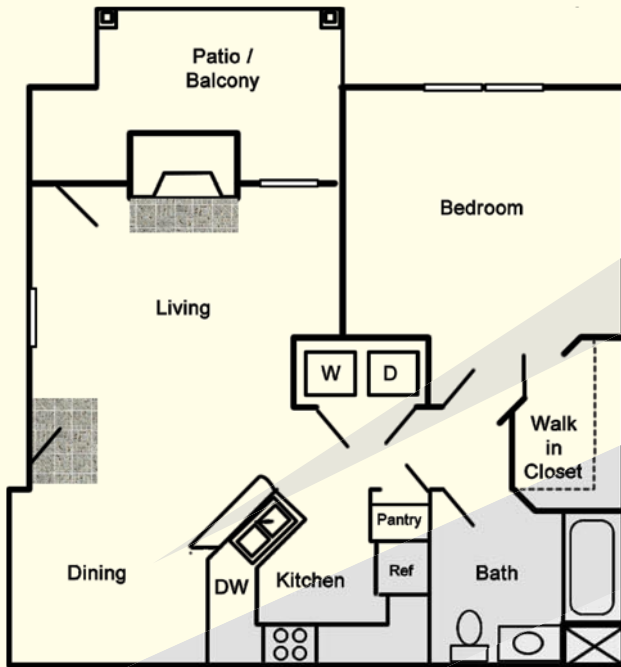
Phone: (972) 285.5009

Fax: (972) 285.5019
www.lbjgardenvillas.com

* In Select Units Only

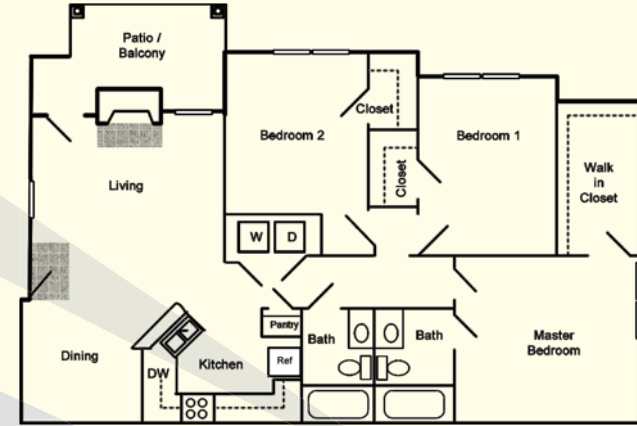
** All information is subject to change without notice.

One Bedroom /One Bath
733 Sq. Ft.*

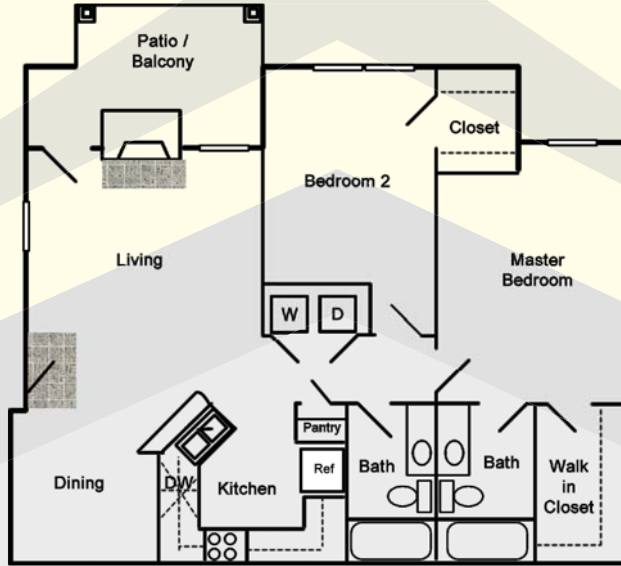


Our Mission is to provide high-quality affordable housing for our residents.

Three Bedroom /Two Bath
1194 Sq. Ft.*



Two Bedroom /Two Bath
997 Sq. Ft.*



1725 Oates Drive
Mesquite, TX 75150

Phone: (972) 285.5009

Fax: (972) 285.5019
www.lbjgardenvillas.com

*All square footage is approximate